

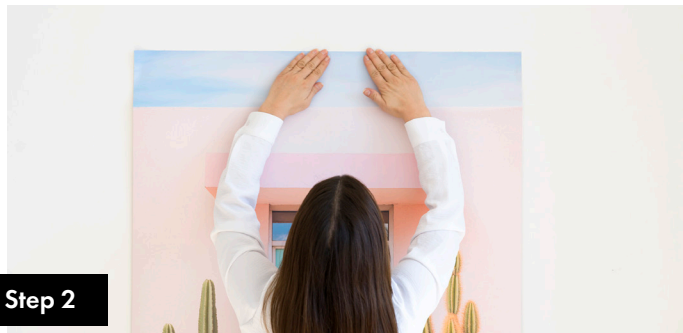


HOW TO GUIDE



Step 1

After removing the Stickablez and squeegee from packaging, peel and fold liner down 2 inches from the top of the print.



Step 2

Gently press the exposed adhesive against a clean wall. Make sure the print is straight and re-position if needed.



Step 3

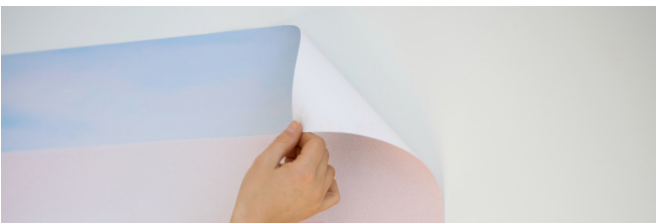
Use the provided squeegee tool to smooth print on to the wall, starting in the middle.



Step 4

Slowly work down, peeling the liner in 2 inch increments and smoothing with the squeegee as you go until complete.

REMOVAL



To remove your Stickablez, gently lift from corners, pulling downward and not away from the wall.

TIPS

- + For best application, please make sure wall is clean and dry before applying.
- + Use Painters Tape to help keep larger graphics in place while installing.
- + Want to save your graphic after you take it down? Lay down a PVC shower curtain liner on a flat surface and then carefully stick the removed Stickablez on to it.



PEEL & STICK CANVAS ART

HOW TO APPLY LARGE SIZES



SCAN QR CODE
FOR VIDEO GUIDE

@BIGWALLDECOR



visit bigwalldecor.com/stickablez

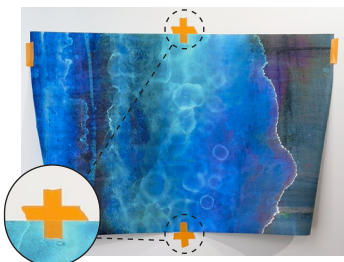
TIPS BEFORE YOU BEGIN:

- ✦ Make sure your wall is clean, dry, and free of dust. Your Stickablez will adhere properly and last longer on dry, clean walls.
- ✦ Unroll your Stickablez artwork and let it lay flat for a few minutes to relax any curls. This will make the application easier.

Step 1

Tape the top corners of your Stickablez to the wall. This will help you position the art correctly without it falling.

Apply 2 pieces of masking tape at the top center point and at the bottom, in a cross form creating a hinge.



Step 2

Using the hinge to keep the artwork in place, fold the right side back exposing the liner.



Step 3

Peel back the liner from the corner and carefully tape the sticky corner to the wall.

This will make it easier to handle the artwork as you peel off the rest of the liner.



Step 4

Slowly peel the liner off this half of the Stickablez. To make things easier, carefully cut the liner off in the center, away from the wall. This half will now be liner-free and ready to stick.



Step 5

Take the corner (without liner) and hold at a 45-degree angle away from the wall.

Using a squeegee, start from the center and work your way out. Work a couple of inches at a time, moving outward to smooth out any air bubbles.



Step 6

Repeat the same process on the other side. Remove the remaining liner, squeegee from the center outward. Make sure to smooth out any air bubbles as you go.



Step 7

Once both sides are adhered, give the entire Stickablez a final smooth down with the squeegee.

Enjoy your new art!
Stand back and admire your perfectly installed Stickablez wall art.

