

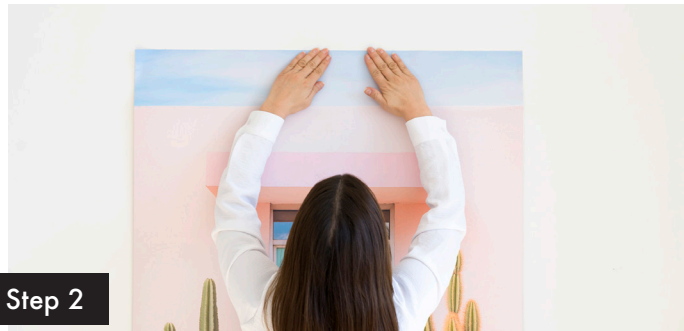


HOW TO GUIDE



Step 1

After removing the Stickablez and squeegee from packaging, peel and fold liner down 2 inches from the top of the print.



Step 2

Gently press the exposed adhesive against a clean wall. Make sure the print is straight and re-position if needed.



Step 3

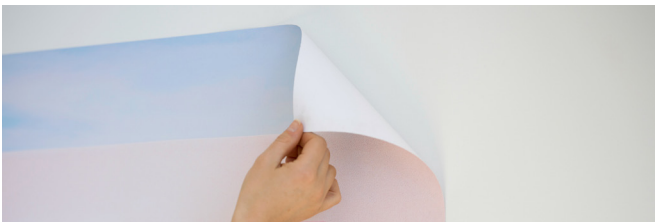
Use the provided squeegee tool to smooth print on to the wall, starting in the middle.



Step 4

Slowly work down, peeling the liner in 2 inch increments and smoothing with the squeegee as you go until complete.

REMOVAL



To remove your Stickablez, gently lift from corners, pulling downward and not away from the wall.

TIPS

- + For best application, please make sure wall is clean and dry before applying.
- + For larger Stickablez, we recommend applying with 2 people to help the graphic go up smoothly.
- + Use Painters Tape to help keep larger graphics in place while installing.
- + Want to save your graphic after you take it down? Lay down a PVC shower curtain liner on a flat surface and then carefully stick the removed Stickablez on to it.